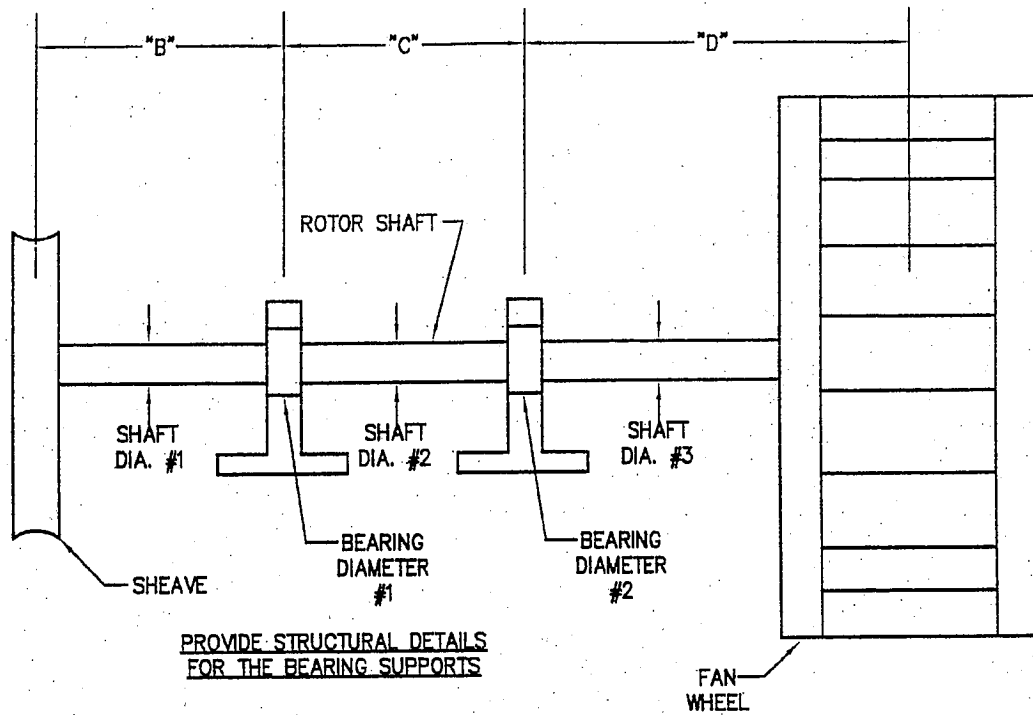


SHAFT DIAMETER		PARAMETERS	
DIA. 1	_____	BEARING DIA. 1	_____
DIA. 2	N/A _____	BEARING DIA. 2	_____
DIA. 3	N/A _____	SHEAVE WEIGHT	N/A _____
B.	N/A _____	FAN WHEEL	_____
C.	_____	WEIGHT	_____
D.	_____	DIAMETER	_____
		RPMS	_____
		INERTIA	_____

Figure C Direct Drive In-Line Fan

SCALE: None

NOTE: "Direct-drive" fans are covered by this figure; the drive motor has bearings, a shaft, and supports the fan wheel.

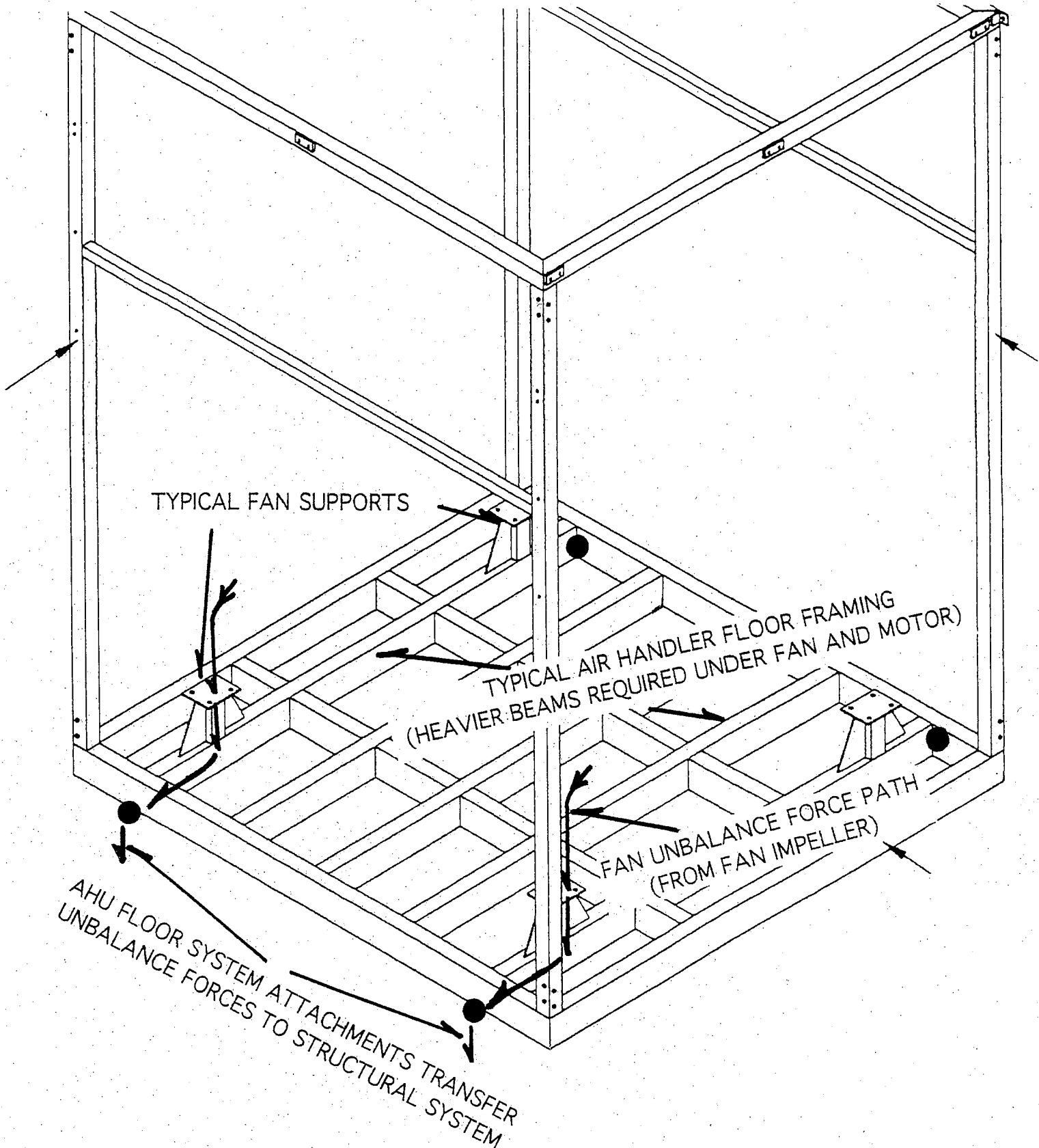


PROVIDE STRUCTURAL DETAILS FOR THE BEARING SUPPORTS

PARAMETERS	
SHAFT DIAMETER	
DIA. 1 _____	BEARING DIA. 1 _____
DIA. 2 _____	BEARING DIA. 2 _____
DIA. 3 _____	SHEAVE WEIGHT _____
B. _____	FAN WHEEL WEIGHT _____
C. _____	DIAMETER _____
D. _____	RPMS _____
	INERTIA _____

Figure B Fan Wheel Not Between Bearings

SCALE: None



TYPICAL AIR HANDLING UNIT (AHU) DETAILS