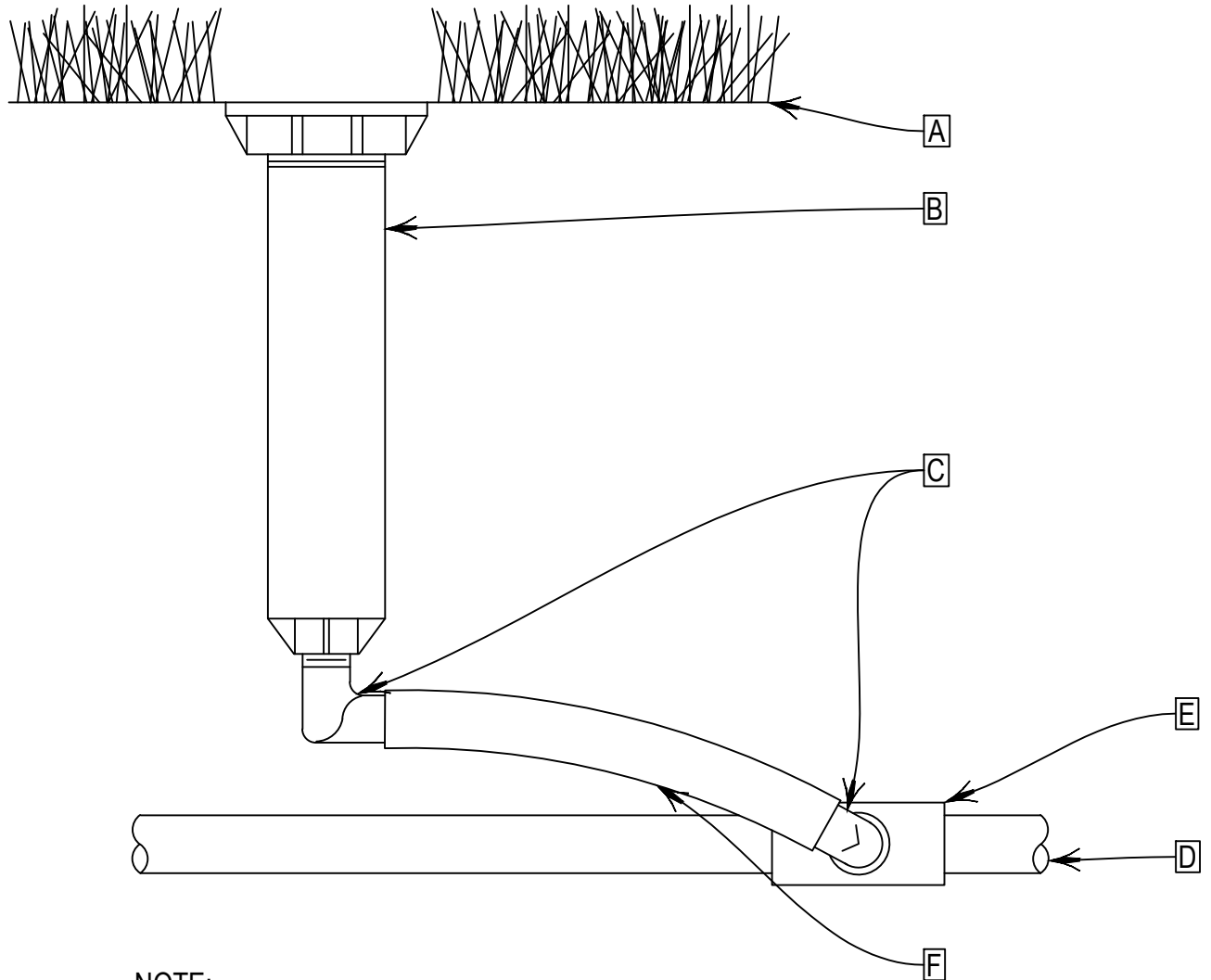


- A. FINISH GRADE
- B. POP-UP SPRAY SPRINKLER
- C. 1/2-INCH MALE NPT X 0.490-INCH BARB ELBOW
- D. PVC LATERAL PIPE
- E. SCH. 40 PVC TEE OR ELBOW
- F. SWING PIPE



NOTE:

1. SWING PIPE TO BE CONNECTED TO THE BOTTOM INLET OF THE SPRINKLER BODY.



L18 POP-UP SPRAY SPRINKLER ASSEMBLY