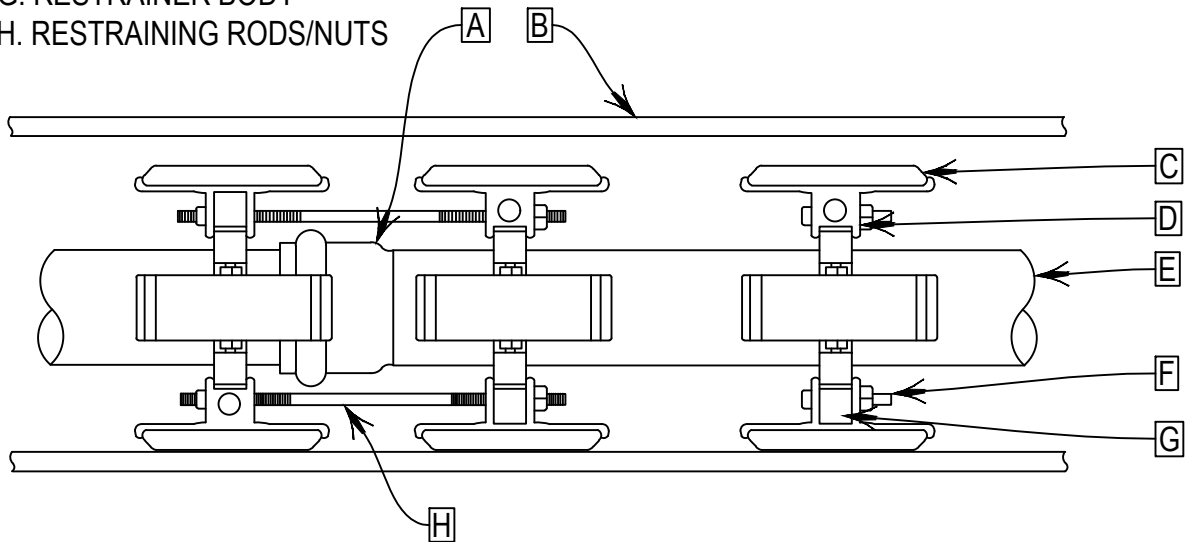


- A. MAINLINE PIPE JOINT
- B. SLEEVE
- C. RUNNERS
- D. RUNNER SUPPORTS
- E. PVC MAINLINE PIPE
- F. CLAMPING BOLTS/NUTS
- G. RESTRAINER BODY
- H. RESTRAINING RODS/NUTS



NOTE:

1. PROVIDE RESTRAINED CASING SPACERS AT ALL PIPE BELL JOINTS AND NO MORE THAN 10' APART PER CASING SPACER MANUFACTURER'S RECOMMENDATION.



L22 CASING SPACER DETAIL