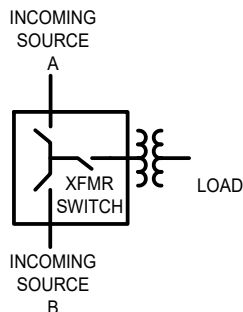
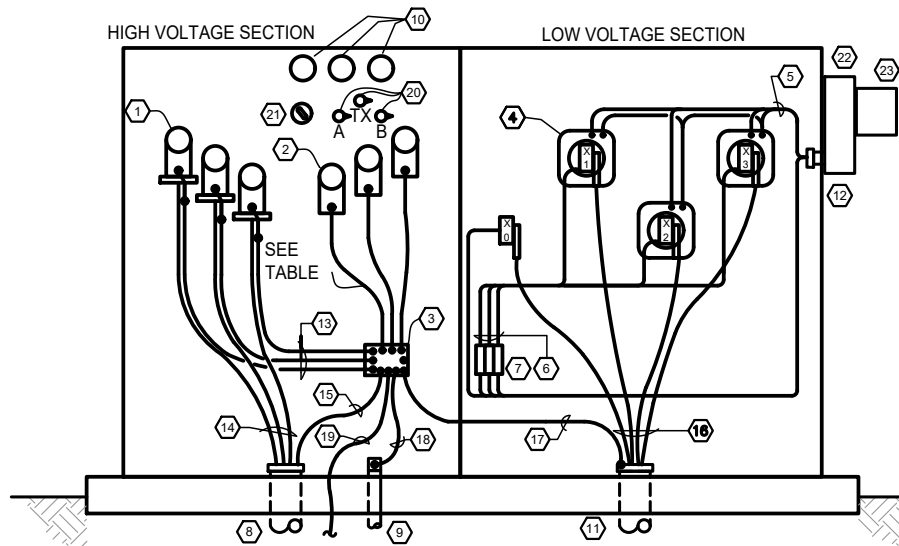


GROUNDING ELECTRODE CONDUCTOR		
TRANS SIZE		GEC SIZE
50 KVA		#2 AWG
75 KVA		#2 AWG
112.5 KVA		#1/0 AWG
150 KVA		#1/0 AWG
>=225 KVA		#2/0 AWG



**LOOP SWITCHES WITH
ON-OFF RADIAL SWITCH**



DETAIL NOTES

- 1 LOAD BREAK ELBOW (TYP)
- 2 M.O.V. ARRESTER (TYP)
- 3 OVERSIZED GROUNDING PAD
- 4 BUSHING C.T.
- 5 4#12 AWG CURRENT LEADS
- 6 4#14 AWG POTENTIAL LEADS
- 7 FUSE BLOCK. (3) 2A FUSES MOUNT ON HV-LV COMPARTMENT BARRIER
- 8 PRIMARY CONDUIT
- 9 10' BY 3/4" GROUND ROD
- 10 DUAL ACTING CURRENT LIMITING FUSES
- 11 SECONDARY CONDUIT
- 12 METERING CONDUIT
- 13 3#10 AWG ELBOW DRAIN WIRES
- 14 PRIMARY CABLES
- 15 PRIMARY GROUND SIZE PER TABLE
- 16 SECONDARY CABLES
- 17 SECONDARY GROUND
- 18 #6 BARE CU TO GND ROD.
- 19 #6AWG PRIMARY DUCTBANK GROUND CONDUCTOR
- 20 A,B LOOP SWITCHES WITH ON-OFF RADIAL XFMR SWITCH
- 21 NO LOAD TAP CHANGER OPERATOR
- 22 METER BASE
- 23 METER

TRANSFORMER EOL DETAIL WITH METER

NO SCALE

Colorado State University FACILITIES PLANNING, DESIGN AND CONSTRUCTION STANDARDS	DRAWING: E-1
	ELECTRICAL DIV. 26
DATE: 03/06/2021	
TRANSFORMER DETAIL WITH METER	