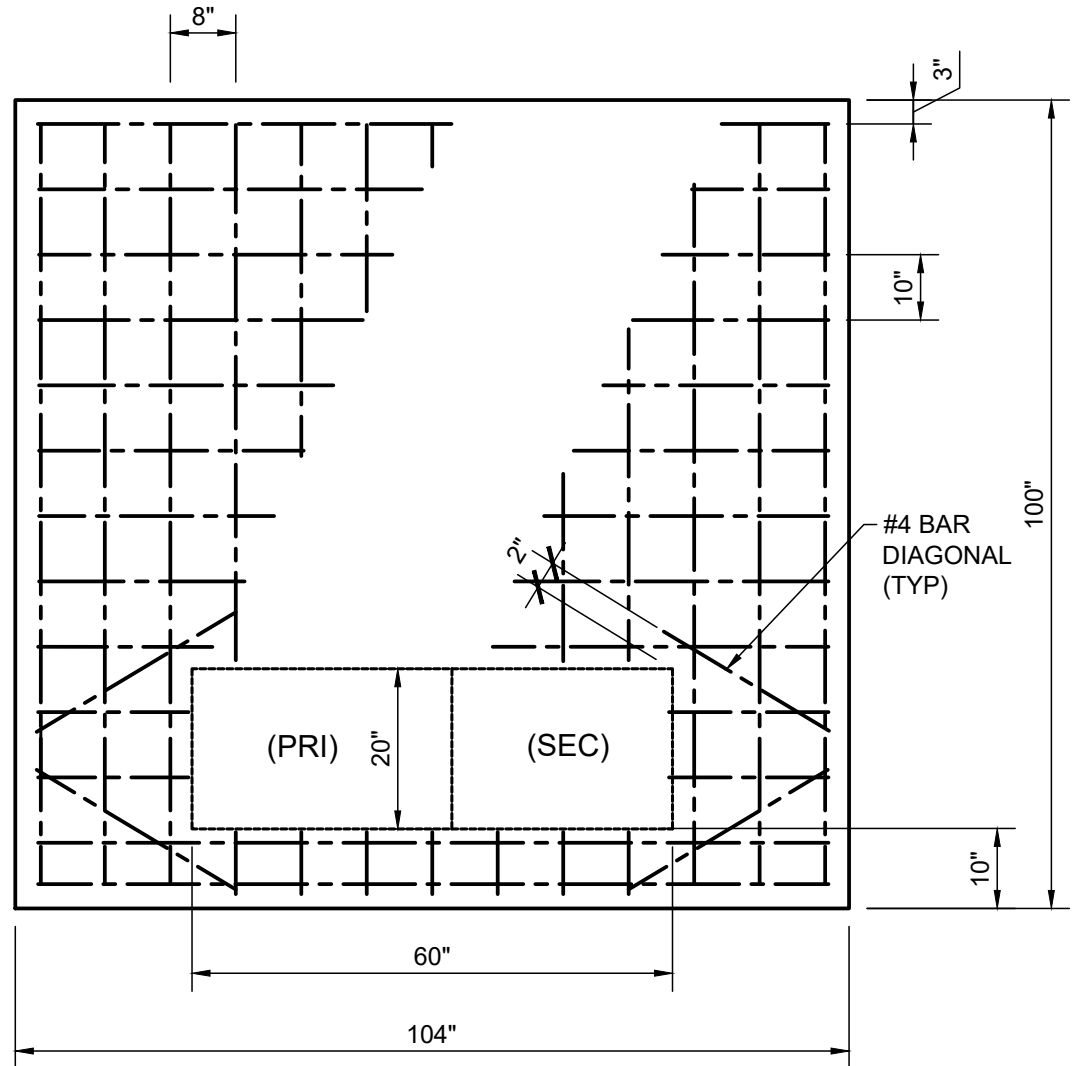
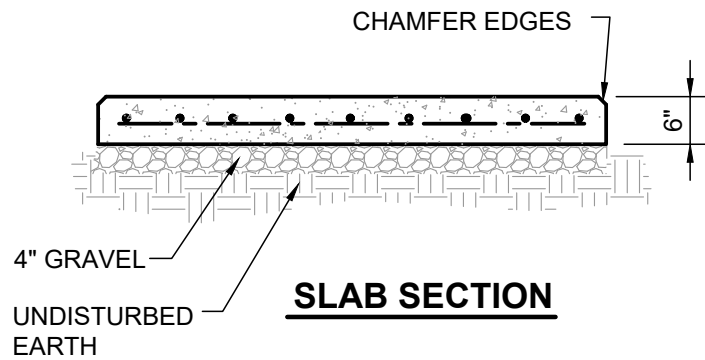
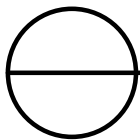


NOTES

1. CONCRETE TESTING, 3000 LBS. MIN. PER SQ/IN; 4% TO 6% ENTRAINED AIR, 3/4" MAX. SIZE AGGREGATE.
2. #4 REINFORCING STEEL, ATSM-A615 GRADE 60, PLACE APPROX. 6" O.C. EACH WAY AND SECURELY TIED TOGETHER.
3. MINIMUM CONCRETE COVER OVER REINFORCING STEEL 2" UNLESS NOTED.
4. WOOD FLOAT FINISH, LEAVING NO DEPRESSION.



SLAB PLAN



TRANSFORMER PAD 750 TO 2500 KVA

SCALE: 1/2" = 1'-0"

| | |
|---|------------------------|
| Colorado State University FACILITIES PLANNING, DESIGN AND CONSTRUCTION STANDARDS | DRAWING: E-3 |
| | ELECTRICAL DIV. 26 |
| DATE: 03/06/2021 | |
| TRANSFORMER PAD 750 TO 2,500KVA | |