

April
12, 2021

FACILITIES MANAGEMENT

AT COLORADO STATE UNIVERSITY

FM WEEKLY
COMMUNICATION

Issue 112

Dear FM Team,

April is [Earth Month](#) at CSU, and I am proud to share that Facilities Management (FM) is finding a number of ways to engage and educate our community as part of the celebrations.

Stacey Baumgarn, Campus Energy Coordinator with our FM Engineering & Capital Construction section, is hosting **Sustainability 101 at CSU** sessions for students and employees to learn about what we do at CSU and how to be part of the effort. Upcoming dates are **April 13** (2–3 p.m.), **April 21** (9–10 a.m.), and **April 29** (9:30–10:30 a.m.). You can [register here](#).

Stacey and I also invite all Facilities Management employees to join the [CSU Employee Community Group](#) for the **2021 Earth Day Challenge**. In partnership with the City of Fort Collins, the goal is to have 1,500 households pledge to reduce carbon emissions by 1,000 tons through shifting our behaviors. Homeowners and renters can participate. It's set up as an online game, so you can earn points and win prizes by doing actions like riding your bike to work, turning off the lights, and composting. Let's take action to save energy, water, and resources—on campus and in the Fort Collins community—by finding at least one new thing to start doing. Read more about this challenge [here](#), which goes **through April 22**, Earth Day. Everyone is encouraged to participate.



An Arbor Day Foundation Program

Colorado Arbor Day is this Friday, **April 16!** FM Outdoor Services, for the tenth year in a row, will be planting trees on campus in honor of Arbor Day. Due to COVID, we cannot hold our annual public Arbor Day tree planting event, but as an alternative, the Campus Arboretum Committee will communicate out fun facts and photos via CSU social media about CSU's Campus Arboretum. For example, did you know? The most common CSU main campus tree is honeylocust (9.78

percent), followed by green ash (8.83 percent), blue spruce (7.15 percent), Rocky Mountain Juniper (5.72 percent) and Austrian pine (5.22 percent). We are actively and intentionally working to establish better species diversity, so our overall campus forest will be more resilient to invasive pests, climate change, and severe weather events. The culminating feature will be the release of a short video on **April 23** that looks back on the legacy of our stewardship over 140 years, and highlights our Tree Campus Higher Education designation. To learn more and view the video, check out the CSU

April
12, 2021

FACILITIES MANAGEMENT

AT COLORADO STATE UNIVERSITY

FM WEEKLY
COMMUNICATION

Issue 112

Social links (<https://www.facebook.com/coloradostateuniversity>, <https://twitter.com/ColoradoStateU>) on **April 16** and during Earth Week, **April 19-23**—or go to <https://www.fm.colostate.edu/arboretum>.

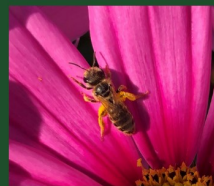
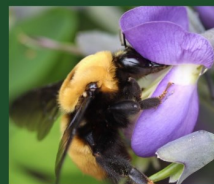
On **April 19** (1–2 p.m.), Campus Planner **Fred Haberecht** will present “**Bee Friendly: How We Can Support Pollinators at Home and on Campus**” on behalf of the Pollinator Friendly Campus Committee (PFCC), along with Lisa Mason, PFCC member and Horticulture Agent at CSU Extension. This training will cover the basics of native bees, honey bees, and other pollinators; options for supporting all pollinator populations; and considerations for becoming a beekeeper. Learn about what FM is doing to provide a landscape that supports pollinators, including what it means for CSU to have our Bee Campus USA designation. [Register here](#).

Erika Benti of Parking & Transportation Services (PTS) will be moderating a discussion on **April 22** (4–5 p.m.) with Dave Dixon, Executive Director of Bike Fort Collins, and Ed Weschler, Mechanic at The Spoke and graduating Senior. The session is called, “**Why I Love Biking in FoCo: A Virtual Earth Week Discussion.**” **Panelists will share** about their favorite routes and destinations around town, including opportunities to get involved in bike advocacy and education, and tips for inexpensive bike repairs. [Join here](#). PTS will also be doing a **Transit Rider Survey and Appreciation on April 20-21**, which will be on-board pop-ups on the CSU Transfort routes.

Thanks to all of you for supporting a sustainable and progressive environment for the CSU community.



Tom Satterly, P.E.
Associate Vice President for Facilities Management



The CSU Pollinator Friendly Campus Committee, Facilities Management, and Extension presents:

Bee Friendly: How We Can Support Pollinators at Home and on Campus



Virtual Webinar
April 19th, 1-2pm

Register here:
<https://green.colostate.edu/earth-month>

#CSUEarthDayEverywhere



COLORADO STATE UNIVERSITY

<https://www.fm.colostate.edu/fmNews>
fac_news@mail.colostate.edu