

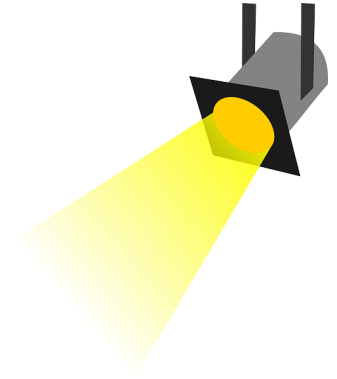
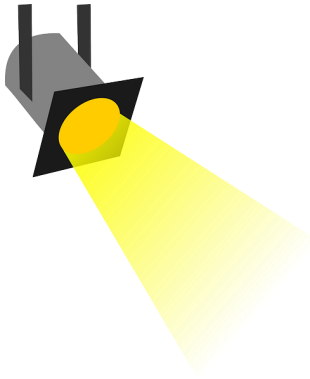
FACILITIES MANAGEMENT

AT COLORADO STATE UNIVERSITY

Facilities Focus – Spring 2020

The quarterly newsletter of CSU Facilities Management

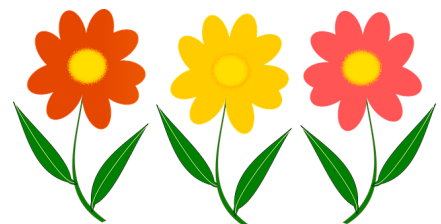
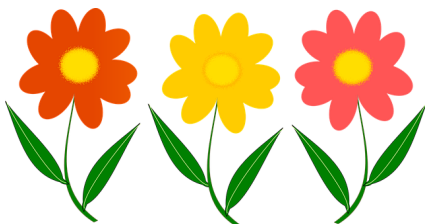
Employee Spotlight: Meet Shelby White



I am an IT Technician in the Computer Services section in our department. I have been with Facilities Management for 1 year and 1 month.

Five things you may not know about me are:

- I am from Briggsdale, CO where my family owns and operates a cattle company, trucking company, and dry land wheat farm.
- In my spare time, I like to go on adventures with Sampson, my 6-year-old Whippet.
- My favorite part about working for Facilities is that we get to explore all the different buildings where people don't usually get to go.
- One of my passions is documenting the history of old buildings, such as old storefronts, long since demolished buildings, and remnants of a forgotten time.
- I am looking forward to going to ComicCon, Disney World, and a Def Leppard concert this year.



New Hires

December 2019 – February 2020

Welcome to our new employees! We are happy to have you on our team!

Jeremy Berrellez - Custodial

James Galindo - Custodial

Zachary Deitrick - RCS

William Jones - District Energy

Scott Diedrich - PM Shop

Garrett Russell - Custodial

Matthew Dillingham - Custodial

Charles Schwarz - Custodial

Guadalupe Franco - Custodial

Jose Valdez - Electric

Daniel Vlosich - Customer Services



Milestones

December 2019 – February 2020

Congratulations to our employees who reached the following years of service milestones!

5 Years

James Horvath

William Kizer

C. Chris Peterson

John J Peterson

Ryan Richardson

Jeffrey Wilcox

10 Years

Erik Jaramillo

15 Years

David Coria

Phillip Goins

Edward Lemieux

20 Years

Mary Hile

Retirements

December 2019 – February 2020

Congratulations to the following FM employees:

Steven Everett (9 years)

Robert Hultman (6 years)

Employee Recognition Committee Updates By Joan Paulson, Custodial Supervisor



As a reminder, the Employee Recognition Committee implemented the \$20 in 2020 for SPARK awards by increasing the gift cards amount to \$20. We are pleased to increase the value of the cards to show you the value of your contribution to the Facilities Management Core Values.

We are currently developing criteria for a couple of new programs that we hope to launch in the next year or so. When the committee first started working on SPARK, it took a couple of years to research and work out the details before approval, so we are currently in the beginning stages for these other programs. We will provide more information in the near future. We are also working on programs to further educate people on the SPARK awards and the available opportunities to recognize employees and colleagues.

It's time once again for the Employee Recognition Committee to randomly draw a name for this Quarter's SPARK award from eligible recipients who have enacted Facilities Management Core Values. This quarter's recipient will receive a total of \$250 (taxable) gift card(s) of the recipient's choosing.

Congratulations **Roy Rodriguez**, the Quarterly SPARK award recipient for our first quarter 2020 drawing!



The Employee Recognition Committee would like to invite anyone who is interested in learning more about the ERC and joining us in our adventures to meetings which are held the third Tuesday of each month in GSB conference room 303 from 2:30 - 3:30 pm.

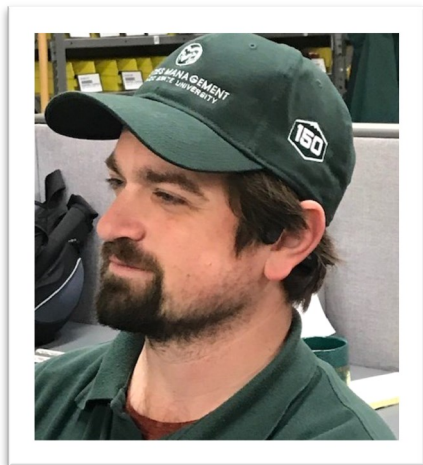
IN TIME FOR SPRING TRAINING - FM BASEBALL CAPS!

**HAVE YOUR SUPERVISOR ORDER YOURS FROM
THE SHOPS CATALOG**

THESE ITEMS ARE TAXABLE,
SO THEY ARE ORDERED
ON YOUR SWO THROUGH FAMIS!

**ADJUSTABLE CAPS IN FABRIC AND MESH WITH FACILITIES
MANAGEMENT AND 150TH ANNIVERSARY LOGO!**

COST FRIENDLY AT UNDER \$12.00!!



It is exciting to witness our campus flourish, and construction is an essential part of the process. Parking Services understands lot closures and detours can make the daily commute challenging. We appreciate your patience in our effort to keep parking safe. Please contact our office with questions concerning relocation of ADA spaces, time zones, and service zones. Complete information on lot closures and construction is available at <https://source.colostate.edu/construction-and-parking/>.

The **Food for Fines program** through our partnership with ASCSU continues to grow in popularity. Fall 2019 donations contributed \$1695 to the Rams against Hunger program; therefore, we are expanding the program from two weeks to a one-month campaign. The program will run from April 20 – May 15. Starting April 20, please visit our website, www.pts.colostate.edu, and click on the Food for Fines link on our main page to donate.



Open sessions were held January through March at Foothills Campus to review parking and transportation plans. Parking and Transportation Services continues to work with individual departments to finalize the plan, which includes parking, transit, and maintenance. Paid parking will go into effect August 15, 2020. Please visit our website for the draft presented during the open sessions at <https://pts.colostate.edu/planning/>.

Visit CSU's **Bike to Work Day** on The Oval!
Wednesday, June 24 6:30 – 9:30 a.m. (in front of Administration)
Free breakfast burritos, coffee, and plenty of treats!

Interested in volunteering at Bike to Breakfast, contact Aaron Buckley at Aaron.Buckley@colostate.edu



Native Bee Watch at CSU

The Pollinator Friendly Campus Committee, facilitated by Facilities Management, is seeking volunteers for a citizen science opportunity Native Bee Watch at CSU. The plan is to monitor the pollinator-friendly garden beds by the Lory Student Center with the overall goal of understanding pollinator diversity on campus and measuring the impact of our campus planting initiatives. There is no previous bee identification experience needed to participate.



Volunteers will need to attend an initial training session on May 21, 2020 from 5:30-8:30 p.m. and then commit to a 2-hour bee monitoring sessions once a month through September.

If you are interested, please email Julia.Innes@colostate.edu to be added to the May training session.

To learn more about CSU's pollinator efforts, visit: <https://www.fm.colostate.edu/pollinators>.

FM Diversity Team Updates

By Jasmine Hatten, Engineering and Capital Construction

This winter, the Diversity Team welcomed six new members: Terry Adams, Zane Bamesberger, Mark Breuer, Jon Cumpsten, Leon Major, and Matt Smith. The team is excited to have these new members and their perspectives be a part of FM's Diversity, Equity, and Inclusion efforts. Each of the team members are working on developing a number of the action items that are called out in the FM Diversity Plan.

The team has had recent conversations about the use of pronouns and adding them to email signatures. This is an inclusive gesture that can give support and create a space for others to feel comfortable to call out the pronouns they prefer to be identified by. If you would like more information on pronouns and why and how they are used, you can find more info at <https://www.mypronouns.org/what-and-why>.

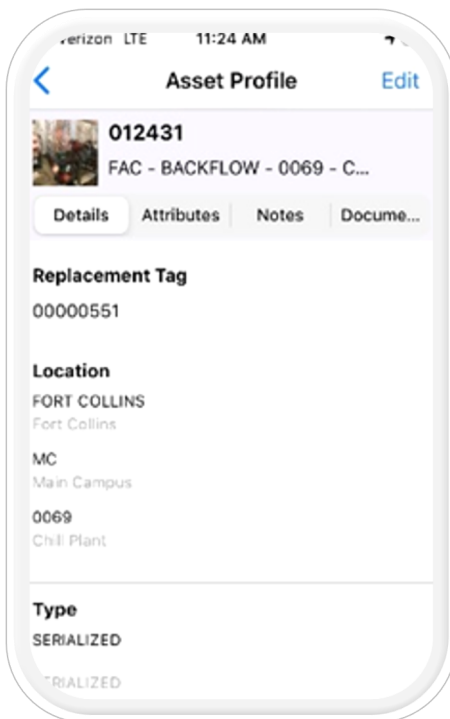
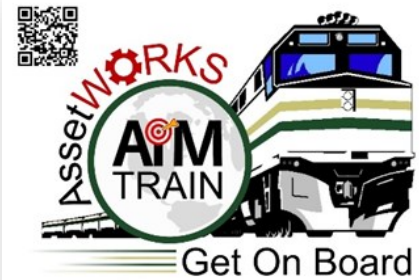
If you are looking for additional resources whether work-related or for personal reasons, the Vice President for Diversity's website has many wonderful resources. Please check out <https://diversity.colostate.edu/recruitment-retention-of-diverse-employees/>.

As always, please email fac_diversity_team@mail.colostate.edu with comments, suggestions, or ideas for the FM Diversity Team or checkout the FM Diversity webpage at: <http://www.fm.colostate.edu/diversity>.

AiM's go live date has changed; we will implement AiM on *July 1, 2020*. It is also a busy time for Facilities especially when it comes to budgets. Budget work has already started with a deadline in early May. This allows some breathing room to work on implementing AiM.

One of Facilities Management's goals with AiM is managing CSU's assets better. Facilities created an Asset Manager position to reach that goal. Changing and creating assets will involve a process that goes through the asset manager.

Not every asset will be explicitly tracked in AiM. For example, a small pump or valve won't have a record in AiM. These assets will be tracked via the system they're part of. AiM uses QR codes to identify assets.



Brian Balthazar and his crew were busy in February labeling over 500 backflow preventors with individual QR codes using the GoApp. They synced the QR code to the backflow preventor by looking up the serial number. They would also take a picture of each one and upload it along with the geo location to AiM. Most of the backflow preventors were already uploaded into AiM. Additional backflow preventors can be easily added into AiM using a template and entering the appropriate information. Generators and elevators will also be done in a similar fashion by the time AiM goes live.

For the latest updates on the implementation of AiM, please visit <https://www.fm.colostate.edu/iwms> or just point your favorite QR code reader at the image.

FM All Department Team Meeting



We will be having an FM Department Wide Meeting on **Friday, May 29, 2020 from 1:00 - 3:00 PM in the LSC Theatre.**

Please join us for updates on construction projects, IWMS, diversity and inclusivity efforts, upcoming training opportunities, and longevity recognition awards!

* subject to change with the current COVID-19 group gathering restrictions.

A reminder that there are three new Raleigh bicycles and an E-bike that can be used by staff on campus for daily needs. The bikes are typically parked under the covered bike parking area along Pitkin Street at Facilities Management North, and are available in sizes medium and large.

Users are asked to reserve the bikes via the Outlook Calendar system similar to any car or conference room that is reserved. Bikes can be found in the system as:

- Fac EQ Green Bike Medium
- Fac EQ White Bike Medium
- Fac EQ Green Bike Large
- Fac EQ Black E-Bike

Bikes will be clearly labeled to identify the one you are reserving. U-locks are provided for each bike. Rather than a key, they utilize a number code, which is currently set as the year that CSU was founded. (We will let you solve this little mystery.) Please securely lock the bike through the frame at bike racks found throughout campus. Use of a helmet is encouraged, and can be found in the marked cabinet in the copy room (Room 149 in Facilities Management North). If you have any issues with the bikes or equipment, please contact David Hansen (david.hansen@colostate.edu or 970.567.0031) for assistance.

Cyclists should remember the rules of the road when riding. As a bicycle driver you have all of the rights and responsibilities applicable to the driver of any other vehicle.

Consider riding a bike the next time you have a need to get around campus. Bicycle commuting supports the University's Climate Action Plan by helping reduce parking space demand on campus while relieving vehicle congestion and greenhouse gas emissions in Northern Colorado.



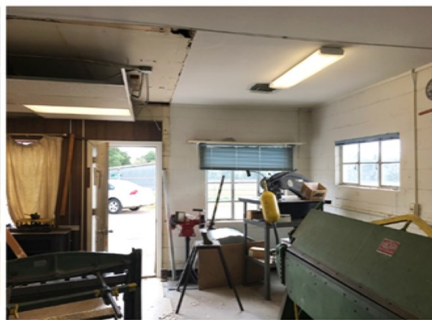
Bicycle Safety tips:

- When crossing railroad tracks ride perpendicular to the rails
- Be predictable to others around you
- Ride defensively
- Wear a helmet
- Keep control of your bicycle by keeping both hands on the handlebars
- Use hand signals when turning

A neglected building on the outskirts of the Foothills Campus, last used for storing scrap metal, has found new life and become a “home away from home” for the group that resides there. The custodial group that manages the Foothills Campus has been without a home base for many years. Moving from one location to the next, as buildings were renovated or torn down on the Foothills Campus, they found their group operating out of some subpar spaces. In addition to managing timecards, the group needed a space that felt like their own, one where they could go on break, enjoy time with coworkers, and have a sense of place.

A small building near the entrance of Rampart Road and across from the Boon San Sally memorable plaque has now become “home” to the group in a few different ways. Prior to the group moving in, the building underwent heavy renovations, cleaning, and electrical work, in order to make the space habitable and functional. Thousands of pounds of metal working equipment was moved from the space. New finishes and flooring were installed to brighten up the interior. All new windows and LED light fixtures were installed to help with CSU’s efforts for sustainability. When approaching the building on a cold winter day, one might see the snow-covered ground or icicles lining the roof, but it’s what the group did on the inside that truly warms the building.

The original project scope did not include furnishings, but the group went out and furnished the space themselves. By looking around the space one can see the group brought their own personality to the space. They even installed personal shelves for employees to bring items in to display. While a prominent goal of work may be to have an even work-life balance, sometimes you are able to add a little bit more of the comforts of home into a workspace.



BEFORE



AFTER

Facilities Management Brochure

FM recently worked with CSU Creative Services to create a Facilities Management Brochure. This new brochure provides helpful information on each of the sections within FM and on the SPARK Program. Copies can be found at the Key Desk, in break rooms/ lunchrooms, and receptionist desks. If you need more brochures, please contact Karin Rees at Karin.Rees@colostate.edu. These are great to handout out to our clients, peers, and visitors. Take a look!

Nail Guns and Other Power Tools

Facilities employees are no strangers to power tools, and it is important to know just how dangerous they can be if not handled correctly. Nail guns, for instance, are the second leading cause of worker hospitalizations according to OSHA statistics. Over 37,000 reportable (i.e. severe) injuries happen every year from nail guns alone! The stats heavily skew toward apprentices in their first 4 years of construction, showing that 40% of apprentice carpenters are severely injured (hospitalized) from nail gun injuries in their first 4 years. 20% of apprentices are injured twice, and 10% are injured 3 or more times.



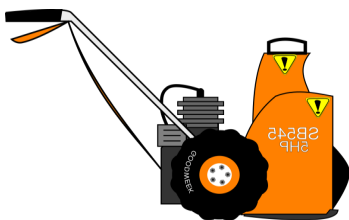
Manufacturers have combated this trend by installing contact safety tips and other fail-safes, but many injuries happen from operator error, such as keeping the trigger pulled down even when moving between contact points. Double firing or accidental discharge accounts for a large percentage of these injuries. Remember, all power tools can suffer from malfunction, but the operator can take steps to protect themselves. Checking equipment for visible defects is a strong first step. Inspect all tools before use; cords, case/housing, and safety mechanisms should be visually checked before every use. Store tools where they will not be exposed to unnecessary wear and tear, and use those tools as intended, without interfering with safety mechanisms, even if it seems tedious or inconvenient.

For more information about nail gun safety, visit: https://www.osha.gov/Publications/NailgunFinal_508_02_optimized.pdf.

For general power tool safety information, go to: <https://www.osha.gov/Publications/osh3080.pdf>.

Fun Fact

CSU employees move a lot of snow from roads, sidewalks, and plazas. Between November and the end of last year, crews moved about 426,545 cubic yards of snow! In other words, a volume equivalent to five Olympic swimming pools or enough snow to fill GSB 19 times!



Check out the new exterior sculpture at the Anatomy-Zoology Building! This artwork, titled *VEIL*, consists of two 8-foot high vertical elements fabricated of glass and stainless steel that are illuminated at night.

Made by AREA C Projects – Erik Carlson + Erica Carpenter, *VEIL* was created and funded through Colorado’s “Art in Public Places” program, which requires that 1% of construction costs of a new or renovated state-owned building be used to acquire works of art for permanent installation at the project site. This university public artwork is associated with the new Health Education Outlook Center (HEOC), the recent addition to the Anatomy-Zoology Building. HEOC’s classrooms and laboratories will advance the university’s longstanding expertise in subjects central to human medicine. In concert with the mission of HEOC, *VEIL* was conceived through a basis of science. As the artists explain:

“*VEIL* engages the ages-old notion of the body as a sealed chamber of wonders. Its two modules each take the form of a scutoid, the twisting polyhedron shape that defines the epithelial cells composing our body’s skin and organ walls. With the scutoid’s discovery in 2019, the long-standing mystery of how these cells pack together to form living envelopes was solved, and a primary building block of multi-cellular life was revealed.

Poised like two puzzle pieces not quite fitted together, *VEIL*’s pair of scutoids gesture toward those biological puzzles that science has already solved, and the questions as yet unanswered. Their stark geometric shells speak to the finite curtain of flesh that closes each body into itself, while selected facets of these shells, peeled or lifted away as if by an anatomist, offer glimpses into a more boundless space within: a kaleidoscopic interior of reflective planes and refracted light, a hint at the world undiscovered beneath our skin.”

CSU has an extensive public art collection including interior and exterior works of art, with almost half of the artwork acquired through the “Art in Public Places” program. To view some of the art within the collection, visit: https://www.fm.colostate.edu/upac_art.



In celebration of the 150th anniversary of Colorado State University, 150 trees will be planted on the CSU Main Campus for Earth Week in April. The plantings are in support of our designation as a university-wide Arboretum. Arboreta are special places for the cultivation and display of a wide variety of different kinds of trees and shrubs, and we hope that our Campus Arboretum will be a resource for employees, students, and the general community for the next 150 years.

Trees selected for the 150-tree planting will be a diverse mix of species and cultivars, many of which have never been planted on our campus before. Read more about the Campus Arboretum at: <https://www.fm.colostate.edu/arboretum>.



Newsletter Committee

Check out this historic Facilities newsletter, published 36 years ago in our department:
[**Take Five, Issue #30, April 3, 1984!**](#)

Facilities Focus aims to communicate to employees that their work and their sections are valuable to FM and CSU, that what we do is recognized and holds meaning and impact. Learn more on our webpage: <https://www.fm.colostate.edu/facilitiesfocus>.

Thanks to the FM Newsletter Committee and *Facilities Focus* contributors for helping create this quarterly newsletter. Thank you to Jon Lindeman for translating the newsletter into Spanish for our department. Look for the next edition in July 2020!