



FACILITIES MANAGEMENT

AT COLORADO STATE UNIVERSITY



Facilities Focus — WINTER 2019

The quarterly newsletter of CSU Facilities Management

SPARK Award Recipients

Supervisors have given out approximately 400 SPARK awards since the beginning of the program, just over a year ago! Interested in reading a few of the SPARK stories shared with the committee? Some are posted on the bulletin board in the north entrance of Facilities Management North or visit <https://www.fm.colostate.edu/SparkStories>. SPARK awards given to staff this past fall include:

Cristina Acosta	Shelly Carroll	Paul Hornbeck	Holly Miller
Tammie Alderin	Bill Caughron	Ed Iker	Rudina Morales
Cindy Allbrandt	Brian Coakley	Dusty Leckler	Tammy Newberry
Adam Anderson	Jon Cumpsten	Greg Mark	Maria Ortiz
Jeff Anderson	Dennis Cyboron	Brad Hestdalen	Robert Pando
Aaron Garcia	Eric Davey	James Horvath	Denise Preuit
Ann Marie Cooper	Blanca Duran	Julie Eaton	David Rezendes
Gwen Cooper	Eric Ennis	Laurie Everett	Janine Rodriguez
Jyenna Baeza	Ruby Feustina-Camancho	Danny Kelso	Roy Rodriguez
Stacey Baumgarn	Ritsuko Fore	Robin Klitch	Angel Romero
Austin Benevides	Javier Gonzalez-Ramos	Rick Krause	Michael Schmid
Teresa Benevides	Juan Garcia	Jim Lawton	Rita Schmid
Jason Blumenshine	Sol Garcia Chavez	Ben Lopez	Lee Sesker
Bryan Breidenbach	Mike Gomez	Ken Luna	Michael Shortall
Lindsey Brown	Ryan Grady	David Luscer	Kelly Siefkes
Jason Brueggeman	Andres Hernandez	Shaun Maisey	Gabe Valdez
Eva Burch	Mary Hile	Nicole Martinez	Nathan Whitehead

Thanks to everyone who completed the recognition feedback survey in November. The Employee Recognition Committee is in the process of compiling the input received. Always feel free to email committee members at fac_employee_appreciation@colostate.edu with any comments.

Professional Development Institute – January 14, 15, 16

The Professional Development Institute (PDI) offers CSU faculty members, state classified personnel, administrative professionals, and graduate students an opportunity to explore a wide range of topics designed to enhance their professional growth and personal enrichment.

Several Facilities Management staff are teaching [PDI Sessions](#) including:

“Smart Cycling Part 1 (Classroom)”

-Date: Monday, January 14, 9am–12pm in the Morgan Library Event Center

-Presenters: Erika Benti and Aaron Fodge

“Smart Cycling Part 2 (On Bike)”

-Date: Monday, January 14, 1pm (Half Day) LSC Plaza

-Presenters: Erika Benti and Aaron Fodge

“Sustainability 101 at CSU – What we do and how you can help”

-Date: Monday, January 14, 9:00–9:50am in the LSC 308-310

-Presenters: Stacey Baumgarn

“Campus on a Carbon Diet – Annual Update of CSU Sustainability Efforts”

-Date: Tuesday, January 15, 10:00–10:50am in the LSC 306

-Presenters: To Be Announced

“Truth Bee Told: Pollinators on Campus and in Our Communities”

-Date: Tuesday, January 15, 10:00–11:50am in the LSC 304

-Presenters: Fred Haberecht, Arathi Seshadri , Colton O’Brien, Ronda Koski, Holly Miller, Mike Amato, Freddie Haberecht and Christina Geldert

Martin Luther King Jr. Holiday

Don't forget! The University will be closed in honor of the Martin Luther King Jr. holiday on Monday, January 21.

Spring Semester

The 2019 Spring Semester begins on Tuesday, January 22.

Spring Break

CSU's Spring Break is scheduled for Monday, March 18–22.

Mobile Food Pantry

Everyone is welcome to the [Mobile Food Pantry](#) at CSU. Just bring your CSU ID and bags for transporting food. Come to the intersection of University Ave. and Meridian Ave. (in front of Hartshorn building) and get up to 50 pounds of food including fruits, vegetables, dairy, and baked goods.

The Mobile Food Pantry will be on campus from 4–6pm on January 24, February 7, March 7, and April 4.



Tree Talk

The Oval is a cherished iconic space for CSU—beloved by students, employees, and the community. Facilities Management maintains routine pruning of the historic trees on the Oval to help prevent damage and to keep these trees healthy. On an annual basis it costs more than \$50,000 to sustain the Oval trees. Annual treatments for insect (scale) control are \$30,000, and the last three-year cycle of pruning was \$130,000.



These costs are supported through university funds and through the Oval Tree Preservation Endowment. The endowment, created in 2011, devotes resources specifically to preserving existing Oval elm trees in a safe and healthy condition for future generations. As these historic trees are lost through extreme age, disease, or storm damage,

the fund contributes to the capacity for new elm trees to be planted in their places. This helps to ensure the Oval composition endures into the future. While the Oval Tree Fund Endowment proceeds go directly toward these costs, they are still only able to cover approximately 10% of Oval costs on an annual basis.

Campus Offerings

ComPsych GuidanceResources® (CSU's contracted provider for Employee Assistance Program services) offers counseling, legal advice, financial planning and work-life balance support. ComPsych provides no-cost, confidential assistance to help address the personal issues faced by employees (faculty, staff, non-student hourly) and members of their households. Staffed by experienced clinicians, 24 hours a day, seven days a week, ComPsych will refer employees to a local, licensed psychotherapist, answer legal or financial questions, or refer you to experts in the community. GuidanceResources® Online is your one-stop shop for expert information on the issues that matter most to you...relationships, work, school, children, wellness, legal, financial, free time and more. CSU employees and dependents are allowed up to **six free sessions per family member, per problem area, per year.**

- **Confidential Consultation on Personal Issues:** *Someone to talk to*
- **Financial Information, Resources and Tools:** *Discover your best options*
- **Legal Information and Resources:** *Expert information when you need it*
- **Work-Life Solutions:** *Delegate your "to-do" list*

Website: [ComPsych GuidanceResources](https://www.compsych.com), **Phone:** (800) 497-9133, **TDD:** (800) 697-0353
Company Web ID: CSUEAP (Please use this ID to create an account)

Thank a Colleague

Thanks to Ben Burkley for working on numerous webpage revamps and for creating new webpages for various committees and sections within FM. Over the last year, we frequently asked him, Can you edit this? And make this update? Upload this document? And create this brand new page with multiple graphics? He assists with a receptive attitude and a willingness to work within our needs and visions. We know he was working on several other projects while we sent our frequent requests, and we just want to express our gratitude. In fact, the entire Computer Services team is incredibly approachable, immensely supportive, and demonstrate constant expertise during all of our day-to-day requests and questions. Thank you to Dallace Unger, Eva Burch, Juan Ramirez, Adam Anderson, Matt Smith, as well as Ben, for your commitment to FM.

—Planning, Design, & Construction team

I just wanted to shout out to all of Facilities staff that helped get Canvas Stadium ready for the final home football. We were dealt with freezing rain, topped with snow, some of the more difficult conditions to deal with. What I witnessed 1st hand was not just trades, custodial, or outdoor services individuals doing their jobs, but a responsive team looking out to provide the best services to campus visitors and our community. I am proud to say I get to be a part of this team! Great job everyone!



—Rodney Gillespie, Operations Manager for Outdoor Services

Subject: FA18 Commencement

I wanted to relay to you all what a pleasure it was to work with your staff members. Jude and Amy were awesome as always with their custodial teams, and while Frank had some big shoes to fill, he dove right in and did a wonderful job taking on the facilities side.

All of their help was so appreciated especially with all of the changes that are taking place at Moby. It always feels great to know I have a friendly staff I can rely on and turn to!

Thanks again, Marissa

—Marissa Dienstag, Associate Director of Presidential & University Events, Office of CSU Events & Donor Engagement

Publicly acknowledge a coworker for their effort, support, or accomplishment. Email your note of appreciation to fac_news@Mail.colostate.edu for consideration in an upcoming *Facilities Focus* issue.

New Hires

September–November 2018

Welcome to our new employees! We are happy to have you on our team!

Tyler Maxey	Gregory Mark	Alex Scott
Richard Alschuler	Jacey Reed	David Camacho
Erik Luedemann	Jordan Miller	Olivia Flores
Donovan Velasco	Mason Smith	Yolanda Reyes
Darrell Haley	Robert Gifford	Francisco Garibay
Beverly Morgan	Adam Garcia	
Conrad Sabin	Mark CacConnell	

Milestones

September–November 2018

Congratulations to our employees who have reached
the following years of service milestones!

5 Years:

Simon Martinez
Robert Hultman
Anthony Gilmore
Edward Dodd
Aaron Stabrava
Patrick Thrasher
Brian Taylor
Lindsay Brown

10 Years:

Eric Luscher
Denise Preuit
Gabriel Bouche
Gustavo Hernandez
Christopher Desautels

15 Years:

Scott Simonds
Timothy Roberts
Dennis Cyboron
Joseph Hoffman
Brian Orso
James Potter

20 Years:

Jay Fetig
Michael Peregoy

25 Years:

Glenda Boyce
Christopher Stoltze
Heidi Mechtenberg

Retirement

September–November 2018



Congratulations to the following FM employees:



JOEL CROMLEY

LEILAN MCLAUGHLIN

New buildings and additions across campus are a sight everyone is now used to. Over the past few years, Colorado State University has completed a number of large, high profile developments across the main and south campus. Canvas Stadium, the Translational Medicine Institute, the Nancy Richardson Design Center, and the CSU Health and Medical Center draw crowds to their ribbon cutting ceremonies. While these buildings deserve their spotlight, little is mentioned about the buildings they evolved from.

When the new \$59 million, 113,000 square foot Health and Medical Center opened in 2017, the large group of medical staff, spread across campus, relocated to the new building. Empty from the recent move, Hartshorn, as it is now named, was the original medical center. Designed by Architect James M. Hunter, and built in 1962, the Student Health Center was the original infirmary for the university and served the entire campus of roughly 9,000 students. The central location on campus led to the CSU Police Department permanently moving into the newly finished basement in 1967. For 30 years, Health Services and CSU PD operated from Hartshorn until the historic flood of 1997. In both 1998 and 2010, Hartshorn underwent building renovations to accommodate the growing number of students. In 2016, over 15,000 students used the services provided by CSU.

The newly completed buildings created quite a shuffle and relocation of smaller departments that, over time, also began to outgrow their space. With three-fourths of Hartshorn now empty from the shuffle, External Relations saw the opportunity to move to Hartshorn. External Relations oversees a number of groups including Marketing, Public Relations, Creative Services, and Web Communications. The groups spread across two buildings, Aylesworth Hall and the Administration Building, were looking for a larger renovated space. The challenges for Remodel and Construction Services were transforming the half-century old medical building into a new contemporary space. The renovations in the 1990s added offices and modernized the building, but original toilets and sinks were left in place, some even in offices.



Hartshorn Renovation (continued)

The second challenge was moving everyone into one building amongst two floors. The west wing of the first floor and the entire second floor were renovated top-to-bottom. Clean site lines and floor to ceiling windows gives occupants framed vistas to the north and south of campus. A west facing balcony allows occupants to step outside during lunch. A semi-open floor plan allows for group collaboration and also private work within the same space. A neutral, contemporary color palette was chosen for the space, to allow Creative Services to showcase their own work.

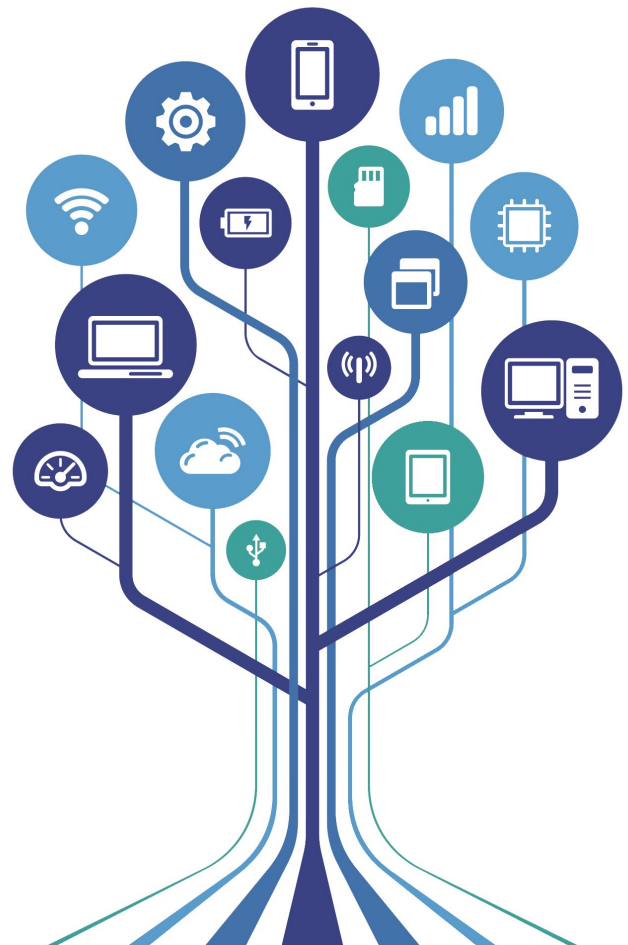
Once occupied, Hartshorn will feel new again, but the effects of shuffling have made its way now to Aylesworth Hall. CSU talked with the *Collegian* back in October, 2017 about the eventual fate and destruction of Aylesworth. Since that time, a new project named Meridian Village has begun design and development for the Aylesworth site.

Section Spotlight/FM Happenings

By Lindsay Brown, Planning, Design, & Construction

IWMS Implementation

Following the IWMS procurement, we executed a contract with Facilities Engineering Associates (FEA). FEA has been engaging with various campus entities including Facilities Management, Housing and Dining Services, the Lory Student Center, and the Student Recreation Center. They are here to start to learn about the process we use at Facilities, as well as the processes of our campus partners. Conversations with FEA have been productive and will help FEA understand FM processes so they can help guide us through the implementation of the AssetWorks products. We have also started to collect data on the assets (equipment) in all of the buildings on campus and are beginning to build the hierarchies that will support these assets. More information regarding the IWMS implementation is anticipated in the coming months.



HEALTH + SAFETY = A HAPPY NEW YEAR

H Help Others

A Ask for help - know your limits

P Plan your work before you begin

P Prepare your materials, tools, and work space

Y Your own health and safety are largely within your control

N Nice, pleasant people keep the workplace calm and safe

E Empower yourself and your coworkers to be positive and encouraging

W Watch for any potential hazards and Warn others when you spot them

Y You are unique and have valuable talents and insights to contribute

E Expect the unexpected; watch out for the other guy!

A Accept the situation you have and Add good energy

R Renew your mind, body, and spirit in healthy ways on your time off.

! Prediction for 2019 ...We can prevent most workplace injuries**!**



Project Highlight

By Kyle Presnell, Remodel and Construction Services

Facilities Management is the backbone of the university and the amount of work that gets accomplished is truly unbelievable. A year in review, posted by Tom Satterly in September, showed off the true breadth of our work and the accomplishments we all have worked toward. New construction projects totaling +1,000,000 sq. ft. of new building space were built, 350 spaces were renovated, 500,000 hours of labor worked, and over 200 SPARK awards were received. Projects spread across campus and the state have won awards and received the spotlight, but a smaller group of projects have quietly been underway for our Facilities Management buildings. Multiple areas in the buildings are being addressed to fix safety and code violations, while other areas are being re-designed. The projects recently completed are:

The east and south entrances at FM North were re-designed to address egress concerns and sustainability. A new vestibule at the south entrance was added to keep hot summer winds at bay and conserve energy.

The employee breakroom was re-designed to provide employees with an area to relax, eat, and even read a book, away from their daily duties. A contemporary wall graphic shows CSU's iconography across campus and the surrounding areas and was designed to be inviting and encourage employee engagement within the space. Quickly charge your phone or tablet with one of the new USB outlets while you eat.

The IT Services group had outgrown their prior layout and is now in a re-designed open office, maximizing natural light and space.

An open workspace on the southwest part of the building was divided-up with a couple individual offices built for employees whose roles have grown internally.

A formal reception area outside the Edison conference room and AVP office has been designed to help direct visitors and employees.

Foothills custodial office on Rampart Rd. has been remodeled to be the home base of operations for the Foothills Campus.



Reception area design outside Edison Conference Room

As hard as every Facilities Management employee works, these renovations are not only needed but well deserved, and just one of many projects already complete. As 2019 is upon us, additional projects are in the design phase including:

A new RCS shop will be built to the north of the existing location and provide more space for all trades.

Parking & Transportation Services

By Theresa Strom, Parking Services

PARKING SERVICES - FOOD FOR FINES occurred November 26 – December 14

One in ten students are not sure where their next meal is coming from or how to pay for it...

Twice each academic year, before the start of winter break and in the spring before the end of the spring semester, Parking Services participates in a program through RAMS AGAINST HUNGER to support students struggling with food insecurity. Please consider participating in this opportunity in the spring.

Rules and Restrictions:

- Cash contributions will not be accepted at the Parking Office.
- One \$10 donation reduces the citation by \$20
- Donate online at pts.colostate.edu.

Wonder Why?

The Oval stuns us with its beauty throughout the year with the changing seasons. The Oval is often the center of attention, which includes endless graduation photos and numerous events. With all that goes on at the Oval on campus, why wouldn't the historic elm trees be decorated for special events or lit with festive lights for the holidays?

The Oval is dictated by a policy that considers the Oval a special district on campus. The policy defines what business can occur and how it occurs. Banners, lights, and ropes are banned from hanging from the elms. Most importantly, the policy dictates how the elm trees on the Oval are managed, the goal being to preserve the life of the trees.

The Oval's landscaping includes 99 elm trees, with some elms planted as long ago as spring 1881 and many in the 1920s. Some of the elms are 90 feet tall with roots that exceed their height.

Adding decorative lighting to the Oval would be in direct opposition of policy to preserve the majestic trees. Lighting would require digging trenches to install electrical lines, which could potentially damage the roots of the historic trees. Placement of lights could impair the health of the trees.

A policy that dictates how the elm trees are treated ensures the preservation of the Oval and that future generations are given the opportunity to enjoy the natural beauty for years to come.

Fun Facts:

- The Oval is primarily composed of American Elm (*Ulmus Americana*).
- The center double row of trees (the tree allée or avenue) was originally planted in 1881 as part of a larger tree planting effort on campus.
- This occurred almost thirty years before the Oval (as we know it today) was proposed as part of the 1910 Master Plan by W.W. Parce.
- Most of these 1881 trees survive today, but many have been replanted over the last 137 years and are now of equal size with the originals.
- The elm trees ringing the exterior of the Oval were planted between 1922 and 1927 in successive annual plantings.
- Many of these trees are now larger than the original 1881 trees.



Please submit your "Wonder Why" questions to fac_news@Mail.colostate.edu.

FM DIVERSITY TEAM

Are there positive or negative experiences you have had that could help to inform the goal of increasing diversity and a sense of inclusion within FM? Please share comments or suggestions for FM improvements by February 8. The link below is anonymous and we welcome your feedback.

[Feedback for FM Diversity Team](#) (English Link)

[Feedback for FM Diversity Team](#) (Spanish Link)

Newsletter Committee

Thanks to the FM Newsletter Committee for creating this quarterly newsletter. Thank you to Olatz Pascariu for translating the newsletter into Spanish for our department. Look for the next edition in April of 2019!

Trying to find an older issue of *Facilities Focus*? You can explore previous editions of *Facilities Focus* by visiting M:\Facilities Focus.

Do you want to share your idea for an article?

Contact the committee by emailing fac_news@mail.colostate.edu.

Our webpage: <https://www.fm.colostate.edu/facilitiesfocus>



HAPPY NEW YEAR