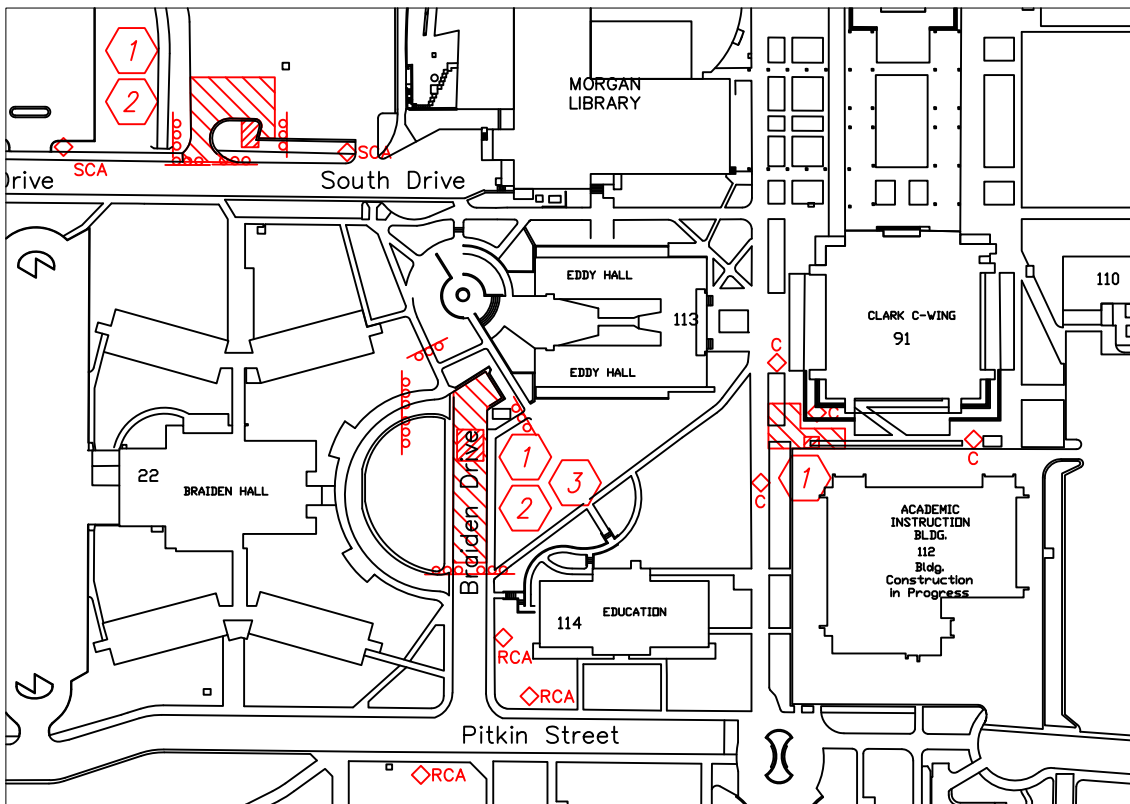


LEGEND

- ◇ LCA LANE CLOSED AHEAD
- ◇ RCA ROAD CLOSED AHEAD
- ◇ SCA SIDEWALK CLOSED AHEAD
- ◇ C CAUTION CONSTRUCTION AHEAD
- ◇ SP SPECIALTY SIGNAGE
- DETOUR → DETOUR DIRECTION
- ONE-WAY TRAFFIC
- ⊢ TYPE-2 BARRICADE OR (SPECIAL)
- ⊢ TYPE-3 BARRICADE
- ▨ NO PARKING/STAGING AREA
- ▨ OPEN EXCAVATION

GENERAL NOTES:

- 1 TRAFFIC CONTROL PLAN IS SCHEMATIC. CONTRACTOR TO SUBMIT DETAILED TRAFFIC CONTROL PLAN WITH SCHEDULE FOR COLORADO STATE UNIVERSITY'S APPROVAL.
- 2 CONTRACTOR MUST POST "NO PARKING" SIGNS A MINIMUM OF 48 HRS IN ADVANCE NOTING THE TIME AND DATES OF CLOSURE.
- 3 BRAIDEN DRIVE WILL BE LIMITED TO THE FOLLOWING DATES FOR ANY WORK INCLUDING TRAFFIC CONTROL, STAGING OR CLOSURE: MAY 17, 2010 TO MAY 28, 2010 AND JULY 19, 2010 TO AUGUST 11, 2010. WORK COMPLETED IN THESE TIME FRAMES MUST INCLUDE PAVING, STRIPING, LANDSCAPING, ETC.



BRAIDEN HALL TRAFFIC CONTROL

(1" = 200')

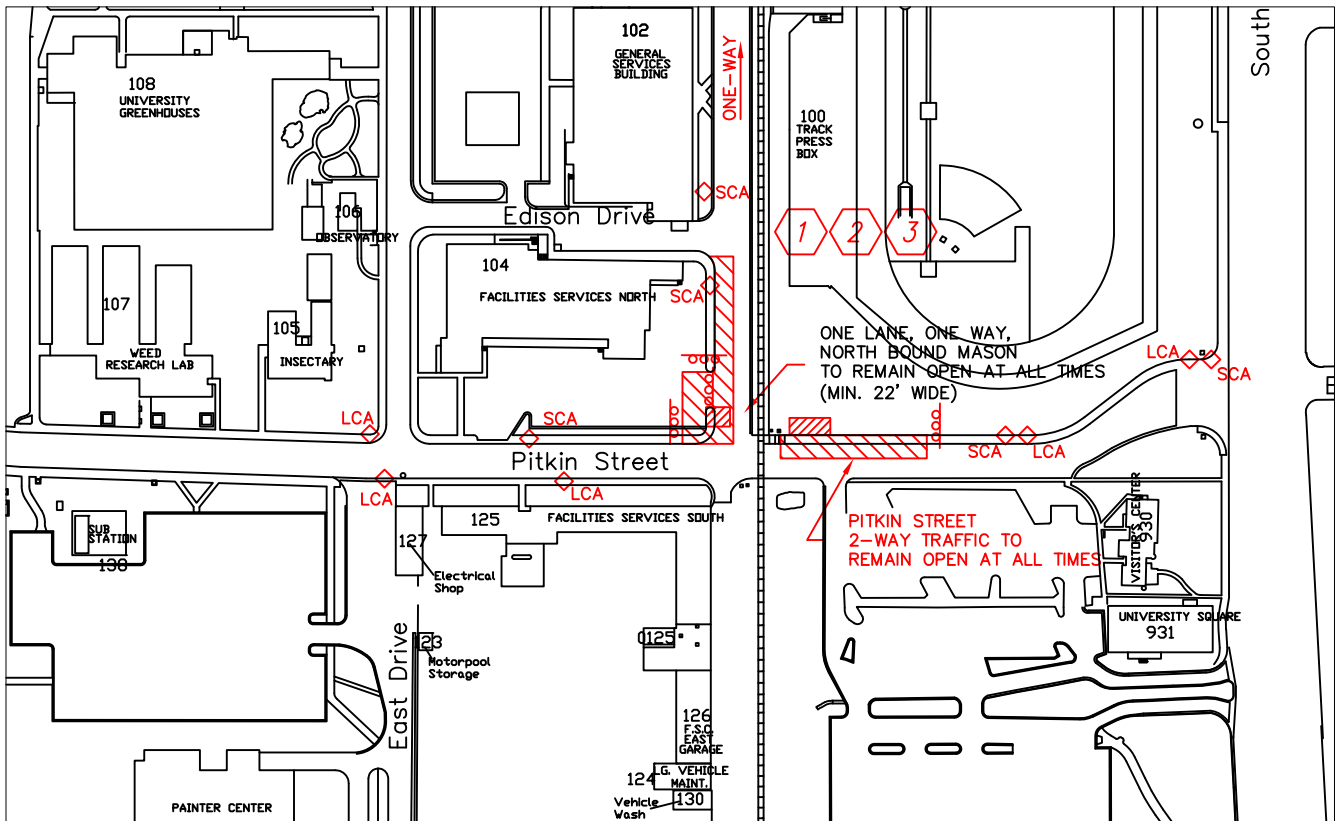


LEGEND

- ◇ LCA LANE CLOSED AHEAD
- ◇ RCA ROAD CLOSED AHEAD
- ◇ SCA SIDEWALK CLOSED AHEAD
- ◇ C CAUTION CONSTRUCTION AHEAD
- ◇ SP SPECIALTY SIGNAGE
- DETOUR → DETOUR DIRECTION
- ONE-WAY TRAFFIC
- ⊢ TYPE-2 BARRICADE OR (SPECIAL)
- ⊢ TYPE-3 BARRICADE
- ▨ NO PARKING/STAGING AREA
- ▨ OPEN EXCAVATION

GENERAL NOTES:

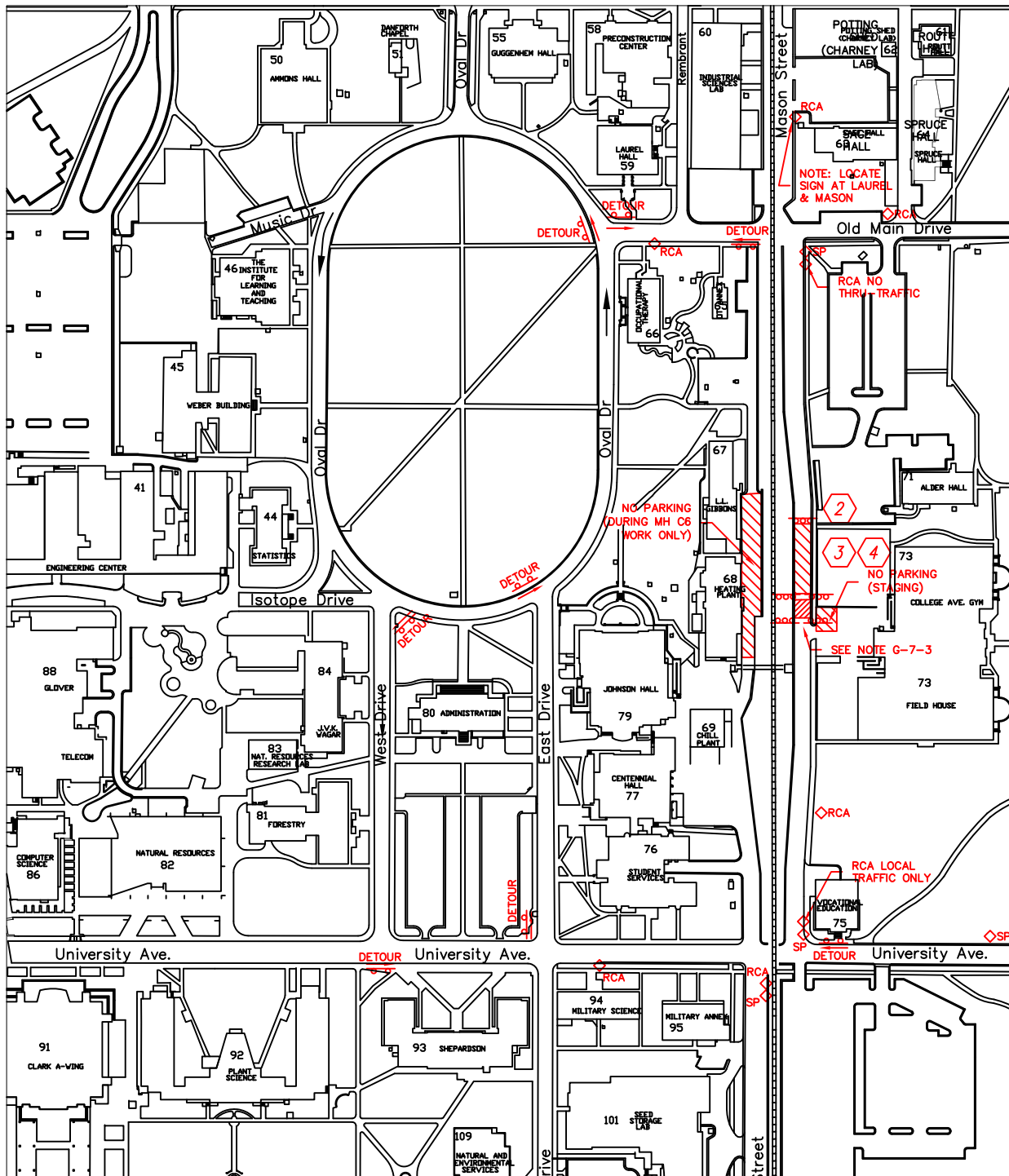
- 1 NO PARKING ON MASON STREET FOR 300 FEET NORTH FROM PITKIN INTERSECTION.
- 2 TRAFFIC CONTROL PLAN IS SCHEMATIC. CONTRACTOR TO SUBMIT DETAILED TRAFFIC CONTROL PLAN AND SCHEDULE FOR COLORADO STATE UNIVERSITY'S APPROVAL.
- 3 CONTRACTOR MUST POST "NO PARKING" SIGNS A MINIMUM OF 48 HRS IN ADVANCE NOTING THE TIME AND DATES OF CLOSURE.



PITKIN & EAST TRAFFIC CONTROL

(1" = 200')





LEGEND

- ◇ LCA LANE CLOSED AHEAD
- ◇ RCA ROAD CLOSED AHEAD
- ◇ SCA SIDEWALK CLOSED AHEAD
- ◇ C CAUTION CONSTRUCTION AHEAD
- ◇ SP SPECIALTY SIGNAGE
- DETOUR DETOUR DIRECTION
- ONE-WAY TRAFFIC
- TYPE-2 BARRICADE OR (SPECIAL)
- TYPE-3 BARRICADE
- ▨ NO PARKING/STAGING AREA
- ▨ OPEN EXCAVATION

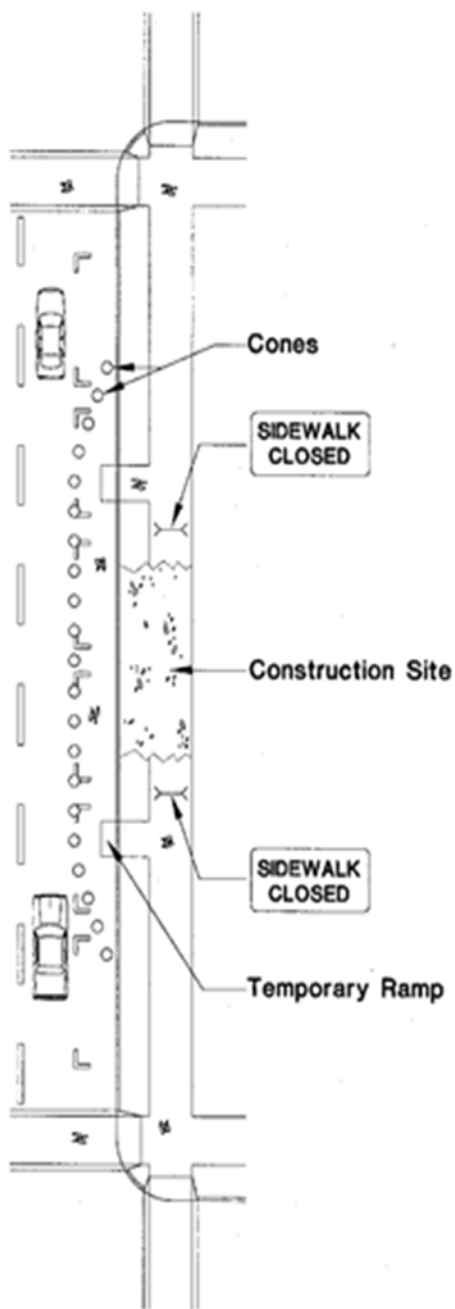


GENERAL NOTES:

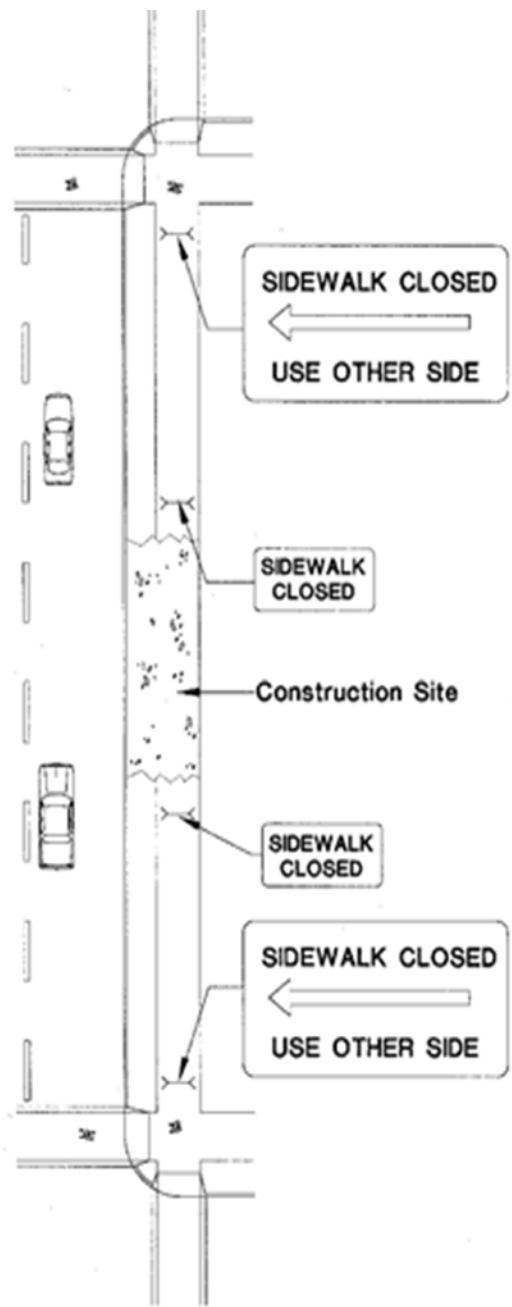
- 1 TRAFFIC CONTROL PLAN IS SCHEMATIC. CONTRACTOR TO SUBMIT DETAILED TRAFFIC CONTROL PLAN AND SCHEDULE FOR COLORADO STATE UNIVERSITY'S APPROVAL.
- 2 CONTRACTOR MUST POST "NO PARKING" SIGNS A MINIMUM OF 48 HRS IN ADVANCE NOTING THE TIME AND DATES OF CLOSURE.
- 3 MASON STREET CLOSURE BETWEEN UNIVERSITY AVE AND OLD MAIN DR. MUST NOT EXCEED 30 DAYS.

MASON STREET CLOSURE

(1" = 200')



Note: Parking lane used for pedestrian travel.



Note: If travel or parking lane is not available/ detour pedestrians with advanced signing

Provide advance signage: "BIKE LANE ENDS. MERGE WITH TRAFFIC".

SIDEWALK AND BIKE LANE CLOSURES